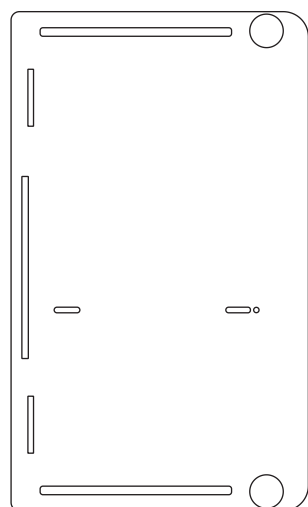


Rose Cottage

Needs a
screwdriver

Assembly Instructions Sheet No 1

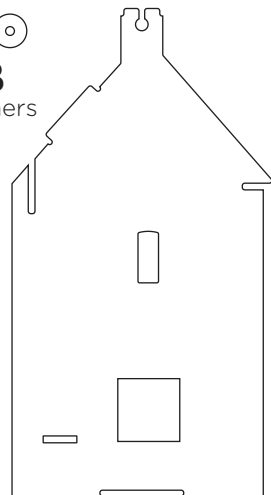
JT101



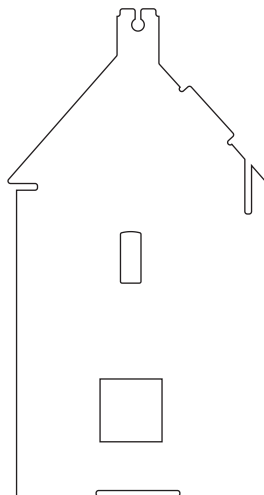
A
base



B
washers



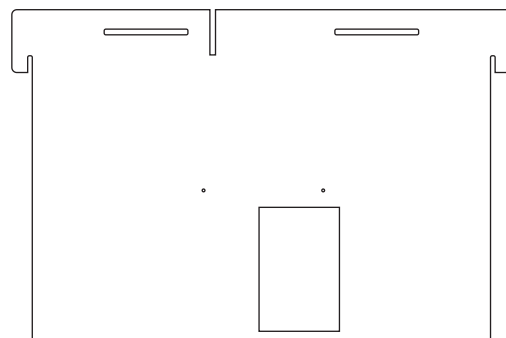
C
left end wall



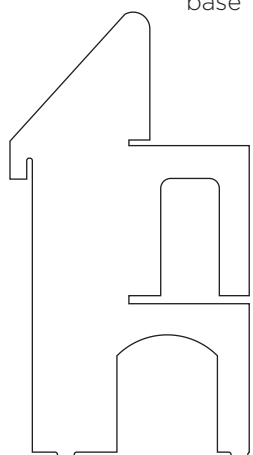
D
right end wall



F
sliding door top



E
back panel



G
centre divider



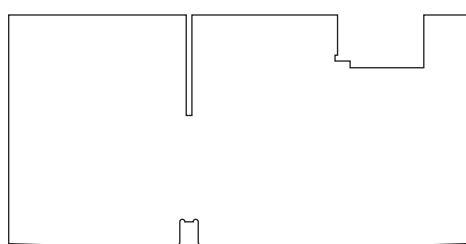
I
section 1 of stairs



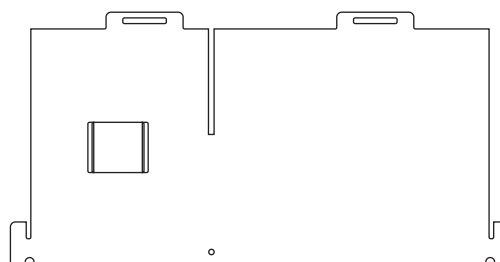
J
section 2 of stairs



L
canopy



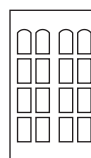
H
second floor level



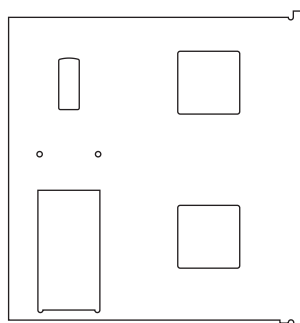
K
third floor level



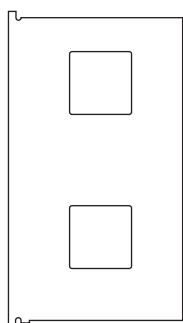
O
locking tabs



P
sliding door



M
front right panel



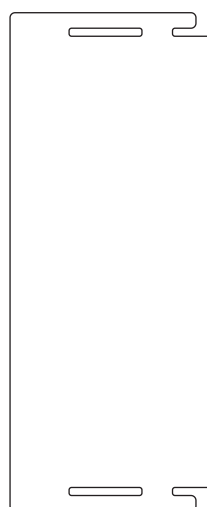
N
front left panel



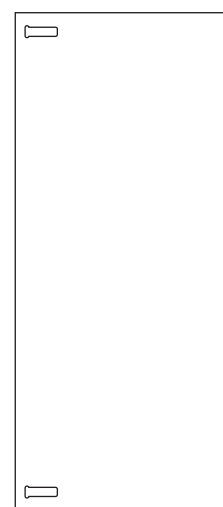
Q
middle
support post



R
screw locking tabs



S
rear roof section



T
front roof section



U
short screws x8

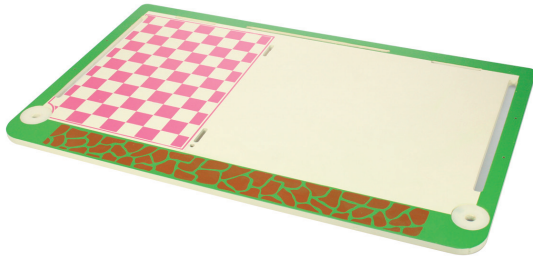


V
long screws x2

Rose Cottage

Assembly Instructions Sheet No 2

JT101



- 1.** Place Part A on a flat surface. Position parts B (washers) into the circular insets in part A.



- 2.** Place part C, the left side panel and part D, the right side panel, in the groves in part A to create the side walls of Rose Cottage.



- 3.** Using two of the short screws (part U), attach part F, the sliding door top, to the back of part E. This creates the top of the sliding door at the rear of Rose Cottage.
Now slide part E, the back panel, into position between the two side panels, parts C and D. This forms the initial shell of Rose Cottage.



- 4.** Position part G through the slot in part E and into the slots in the base to create the centre divider of Rose Cottage.



- 5.** Slot part H, the second floor level, horizontally through the slots in the side walls and centre divider to create the second floor level of Rose Cottage.



- 6.** Slot part I & J together to create the staircase. Position the staircase so the lower part of the staircase slots into the hole in the right side panel. Then lean the top of the staircase against the second floor level.

Rose Cottage

Assembly Instructions Sheet No 3

JT101



- 7.** Slide part K, the third floor level, into position through the slots in the centre divider and side panels, parts C, D & G, to create the third floor of Rose Cottage.



- 8.** Use two of the short screws (part U) to attach part L, the canopy, to part M, to create the front door canopy.



- 9.** Lift the third floor level slightly. Position the top of part M, the front right panel, into the hole in the third floor level. Then push the bottom part of the front right panel into the hole in the base. Repeat this process with part N.



- 10.** Slot parts O, the locking tabs, into position through the third floor level (part K), at the rear of Rose cottage to hold the third floor in place.



- 11.** Lift part E, the back panel, and insert part P, the sliding door, under the sliding door top and into the slot in the base. This will create the rear sliding door.



- 12.** Slot part Q, the middle support post, on to the centre divider of rose cottage. Fix this support post in place with the two longest screws (part V) through the holes in the third floor level and in the base.



- 13.** Place part R, the screw locking tabs, through the slots in the two side panels (parts C & D). Use the remaining four short screws, part U, to fix the locking tabs in place. This will form locking tabs which allows the Rose Cottage to be lifted and carried in one piece.



- 14.** Position part S, the rear roof section, onto the tabs at the rear of Rose Cottage. Next stand part T, the front roof panel, vertically in the slots at each end of the roof. Ensure the roof pattern is facing the rear of Rose Cottage, then fold the roof down into place like a flap.